

5

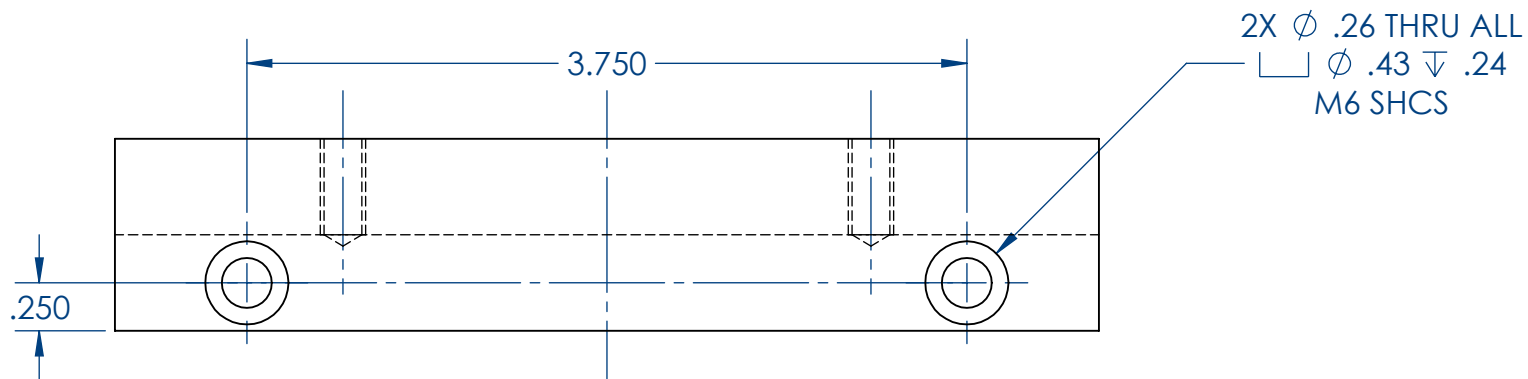
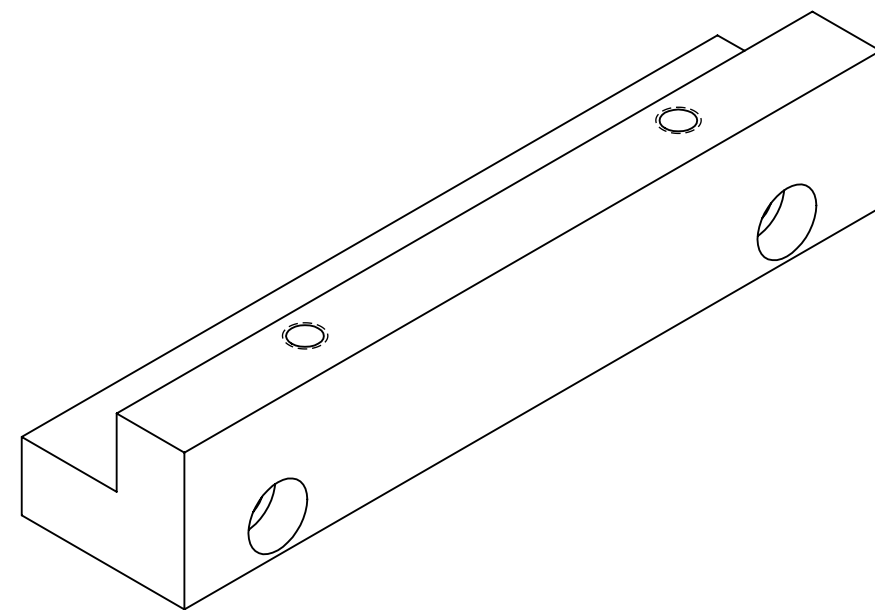
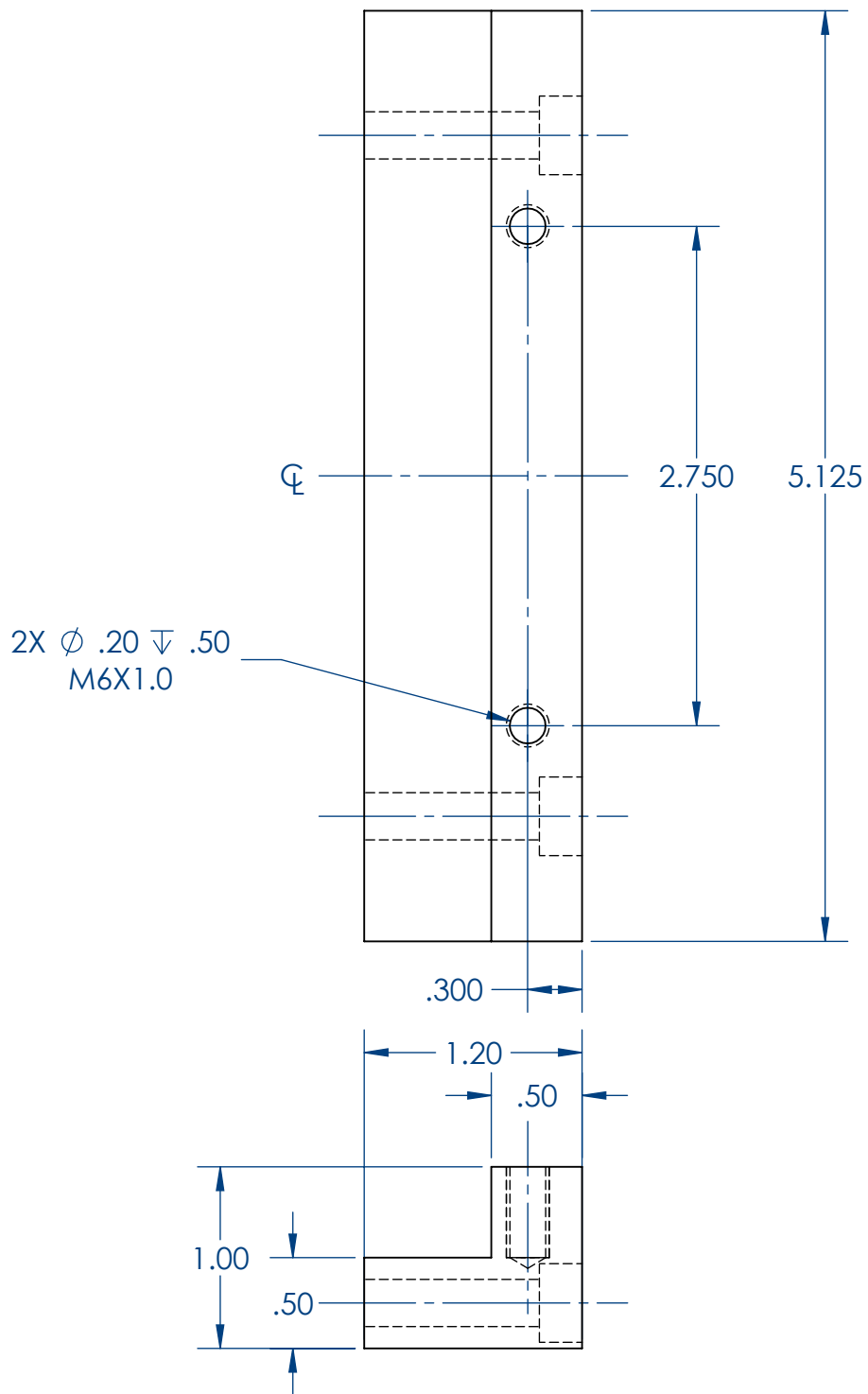
4

3

2

1

REVISIONS					
ZONE	ECN.NO	REV.	DESCRIPTION	DATE	APPROVED



UNLESS OTHERWISE SPECIFIED: DIMENSIONS ARE IN INCHES X ± 0.1 XX ± 0.01 XXX ± 0.005 XXXX ± 0.0005	IMPERIAL DO NOT SCALE DRAWING	ALL FERROUS PARTS MUST BE DEMAGNETIZED		MATERIAL: 44W	MODEL REV:	DRAWING REV:
		Automation Components		TITLE: 6" Mid Mounting Block		
		Designed By: K.Sey	2020-11-26	DWG NO: 2602-01-001-LONG-MIDDLE-BLOCK		
		Detailed By: K.Sey	2020-12-04	SCALE 1:1		
GEOMETRIC DIMENSIONING AND TOLERANCING AS PER ASME Y14.5M-1994		Checked By: A.Car	2020-12-08	SHEET 1 OF 1		
PROPERTY OF STACKPOLE INTERNATIONAL NOT TO BE REPRODUCED WITHOUT EXPRESSED AUTHORIZATION		Approved By:		August 3, 2022 2:22:09 PM		
ADDITIONAL PROCESSES: COATING: NO - OTHER: NO -		WEIGHT: 1.18		STAMP DWG. NO. AND REV. LEVEL AT LOCATION MARKED ↑		
TAGS:		THIRD ANGLE PROJECTION		MACHINE REFERENCE		
		BREAK UNNECESSARY EDGES UNLESS OTHERWISE NOTED 		FINISH SURFACES TO UNLESS OTHERWISE NOTED		

3

2

1

C:\Users\Kristin\Documents\From Lenovo\Stackpole International Projects\Cam Follower Block Assembly\

5

4

3

2

1

D

C

B

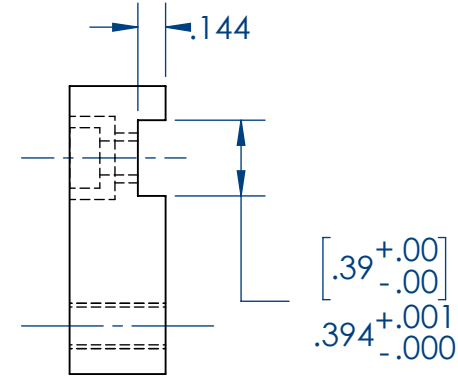
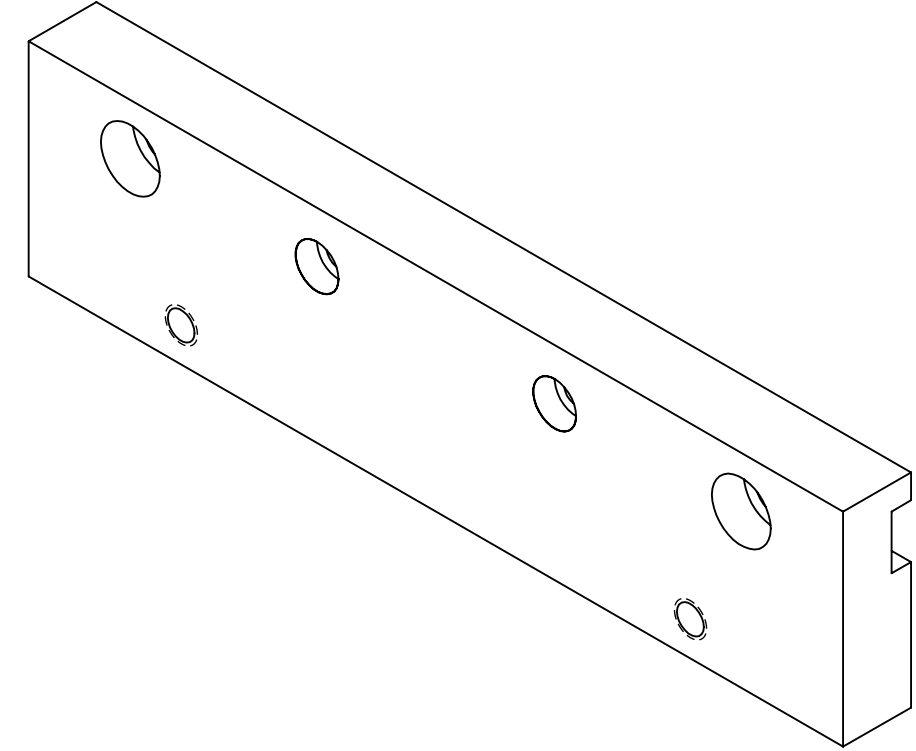
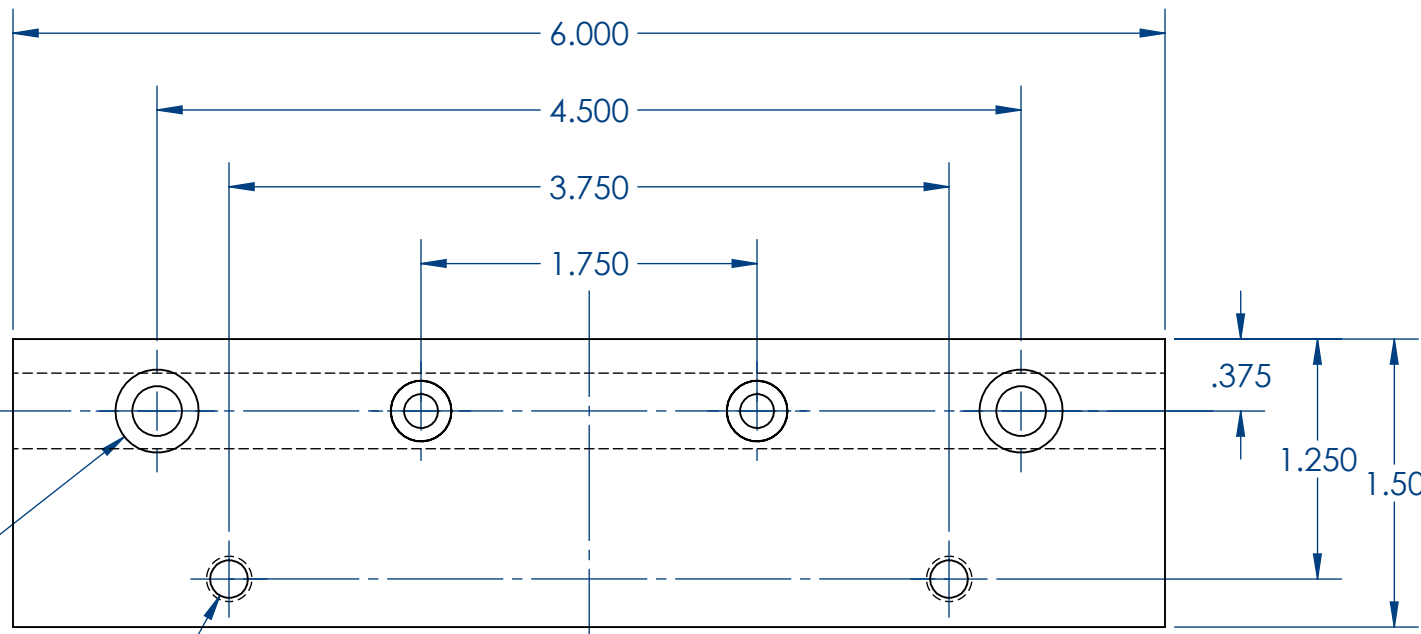
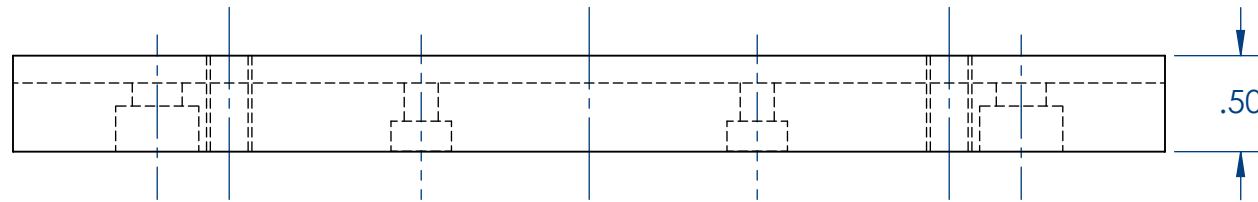
A

D

C

B

A

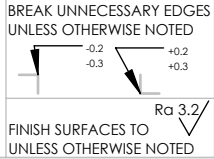
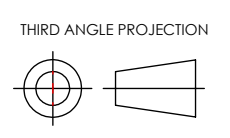


2X ϕ .26 THRU ALL
 \square ϕ .43 ∇ .24

2X ϕ .20 THRU ALL
 M6X1.0 THRU ALL

UNLESS OTHERWISE SPECIFIED: DIMENSIONS ARE IN INCHES X \pm 0.1 XX \pm 0.01 XXX \pm 0.005 XXXX \pm 0.0005 ANGULAR \pm 0° 30'	IMPERIAL		ALL FERROUS PARTS MUST BE DEMAGNETIZED		MATERIAL:	44W	MODEL REV:	DRAWING REV:	
	DO NOT SCALE DRAWING		Automation Components						
	GEOMETRIC DIMENSIONING AND TOLERANCING AS PER ASME Y14.5M-1994		Designed By:	K.Sey	2020-11-26				
	PROPERTY OF STACKPOLE INTERNATIONAL NOT TO BE REPRODUCED WITHOUT EXPRESSED AUTHORIZATION		Detailed By:	K.Sey	2020-12-04				
THIRD ANGLE PROJECTION		Checked By:	A.Car	2020-12-08	TITLE: 6" Conveyor Mounting Block				
BREAK UNNECESSARY EDGES UNLESS OTHERWISE NOTED		Approved By:			2602-01-002-LONG-CONVEYOR-BLOCK				
FINISH SURFACES TO UNLESS OTHERWISE NOTED		MACHINE REFERENCE				SCALE 1:1			
STAMP DWG. NO. AND REV. LEVEL AT LOCATION MARKED \blacktriangle						SHEET 1 OF 1			

ADDITIONAL PROCESSES:	WEIGHT:
COATING: NO -	1.14
OTHER: NO -	TAGS:



C:\Users\Kristin\Documents\From Lenovo\Stackpole International Projects\Cam Follower Block Assembly\

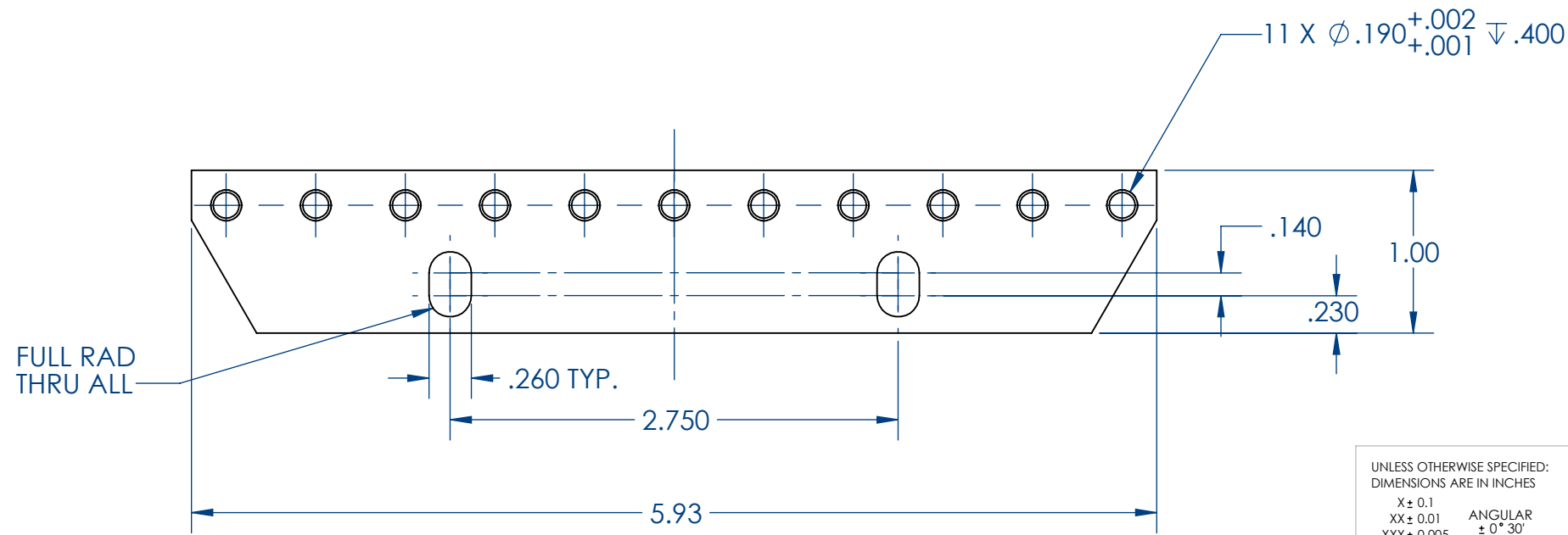
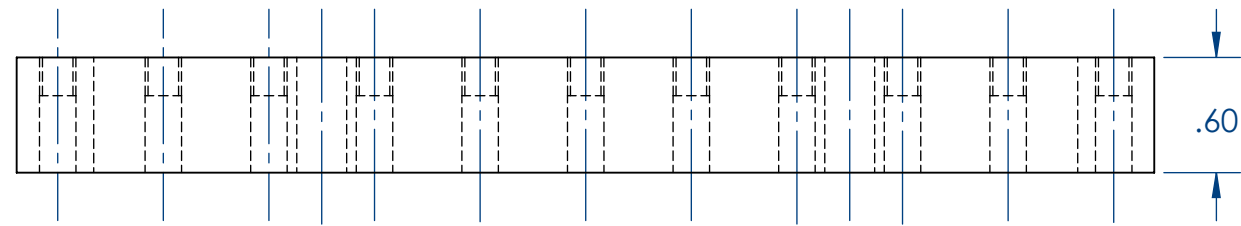
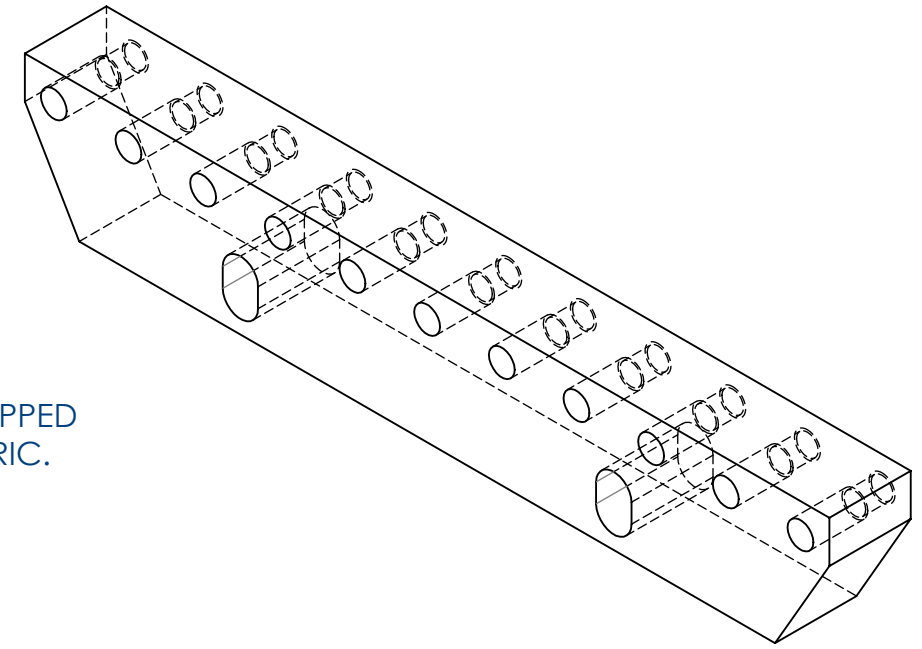
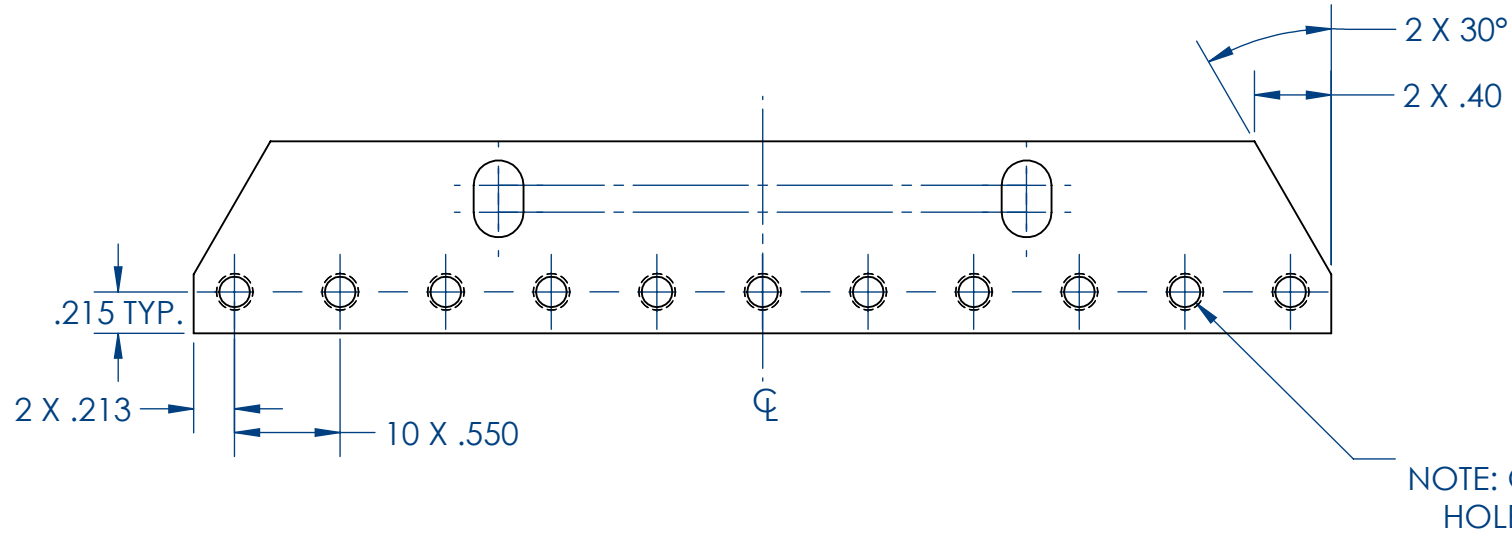
5

4

3

2

1



UNLESS OTHERWISE SPECIFIED: DIMENSIONS ARE IN INCHES X ± 0.1 XX ± 0.01 XXX ± 0.005 XXXX ± 0.0005	IMPERIAL	ALL FERROUS PARTS MUST BE DEMAGNETIZED		MATERIAL: 44W	MODEL REV:	DRAWING REV:
	DO NOT SCALE DRAWING	Automation Components		TITLE: 6" Cam Follower Mounting Block DWG NO: 2602-01-003-LONG-FOLLOWER-BLOCK		
	GEOMETRIC DIMENSIONING AND TOLERANCING AS PER ASME Y14.5M-1994	Designed By: K.Sey	2020-11-26			
	PROPERTY OF STACKPOLE INTERNATIONAL NOT TO BE REPRODUCED WITHOUT EXPRESSED AUTHORIZATION	Detailed By: K.Sey	2020-11-26			
THIRD ANGLE PROJECTION	BREAK UNNECESSARY EDGES UNLESS OTHERWISE NOTED		Checked By: A.Car	2020-12-08	MACHINE REFERENCE	
ADDITIONAL PROCESSES: COATING: NO - OTHER: NO -	WEIGHT: 0.89	FINISH SURFACES TO UNLESS OTHERWISE NOTED		STAMP DWG. NO. AND REV. LEVEL AT LOCATION MARKED \blacktriangle		

C:\Users\Kristin\Documents\From Lenovo\Stackpole International Projects\Cam Follower Block Assembly\

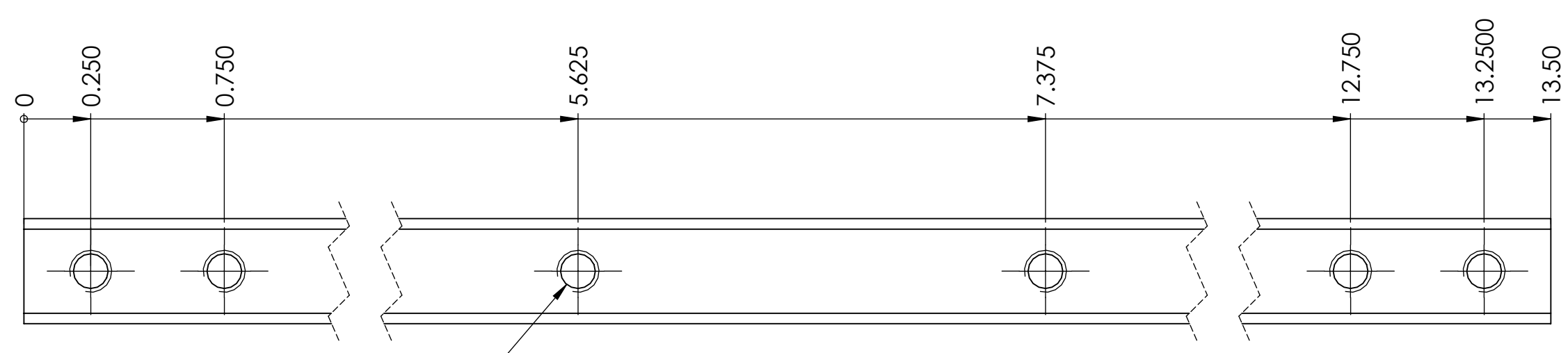
5 4 3 2 1

D

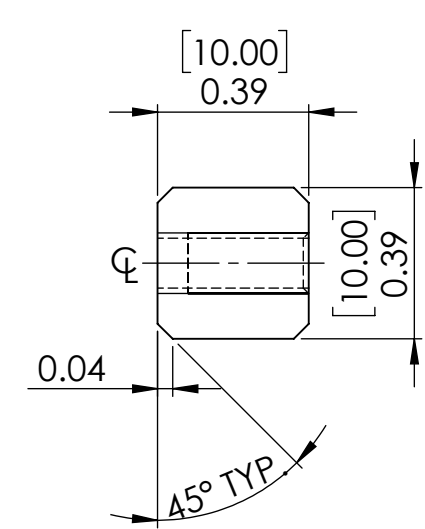
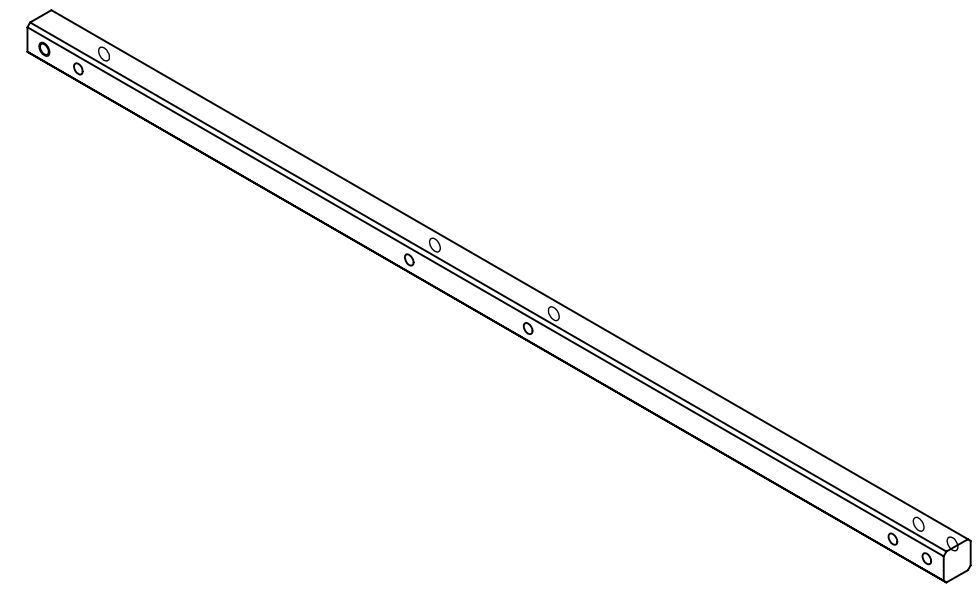
C

B

A



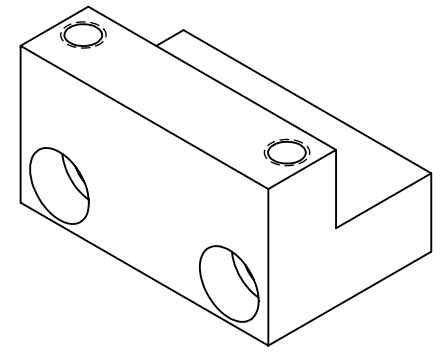
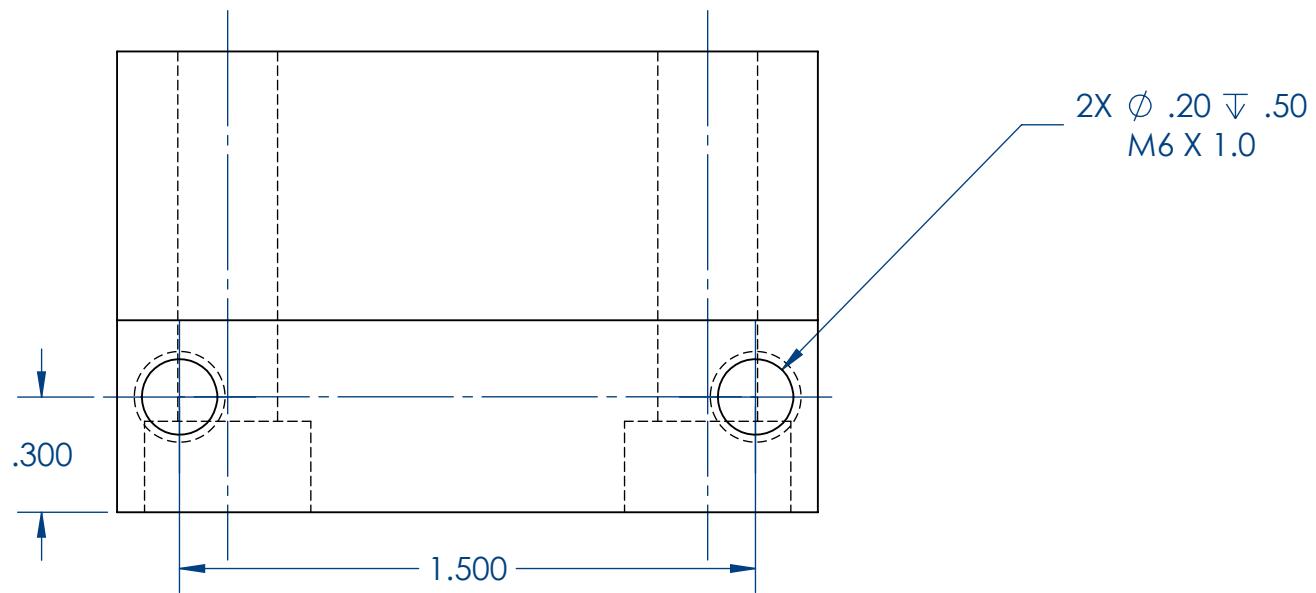
6 x ϕ 0.130 THRU ALL
M4x0.7



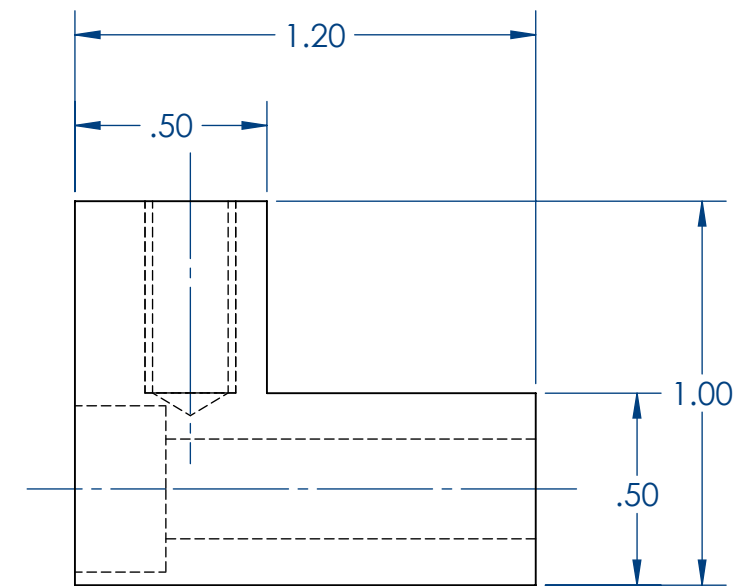
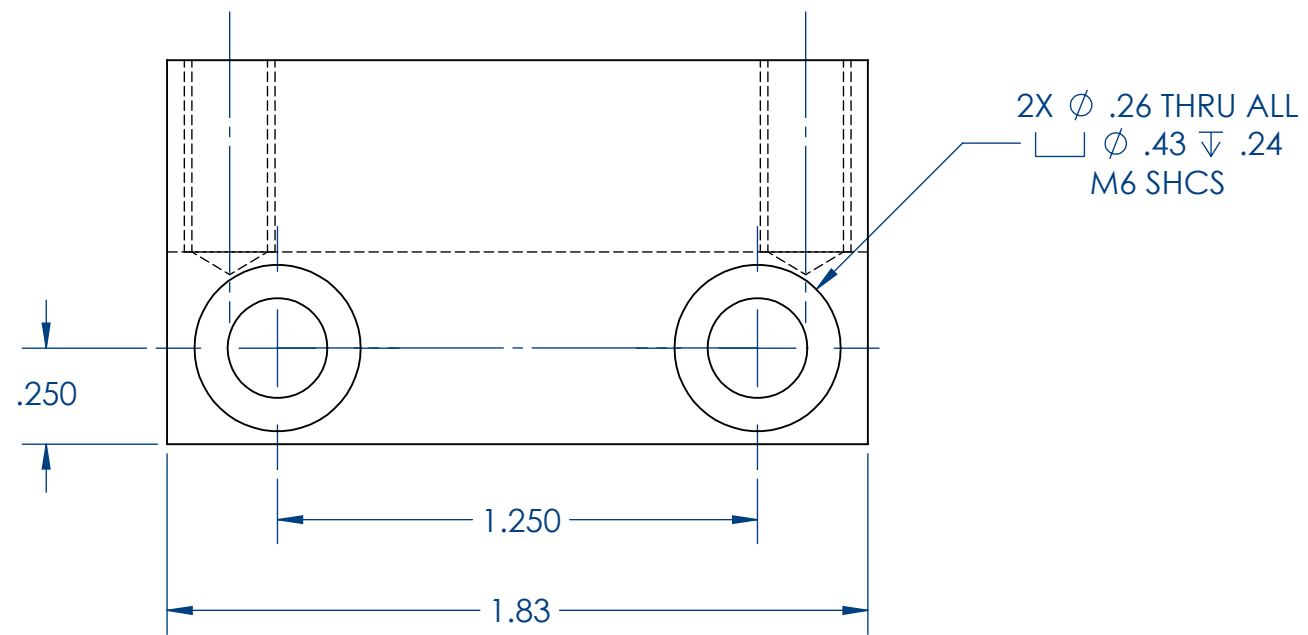
SUGGESTED PART: MCMASTER CARR PART NO.92288A574
MACHINE LEY STOCK, 1018-1045 CARBON STEEL, 1000MM LONG, 10MM X 10MM

UNLESS OTHERWISE SPECIFIED: DIMENSIONS ARE IN INCHES X ± 0.1 XX ± 0.01 XXX ± 0.005 XXXX ± 0.0005 ANGULAR ± 0° 30'	IMPERIAL		ALL FERROUS PARTS MUST BE DEMAGNETIZED		MATERIAL: AISI 1018	MODEL REV:	DRAWING REV:
	DO NOT SCALE DRAWING		Automation Components		TITLE: 13.5" Keyway		
	GEOMETRIC DIMENSIONING AND TOLERANCING AS PER ASME Y14.5M-1994		Designed By: K.Sey	2020-12-10			
	PROPERTY OF STACKPOLE INTERNATIONAL NOT TO BE REPRODUCED WITHOUT EXPRESSED AUTHORIZATION		Detailed By: K.Sey	2021-02-24	DWG NO. 2602-01-004-13.5IN-KEYWAY		
ADDITIONAL PROCESSES: COATING: NO - OTHER: NO -	WEIGHT: 0.57 TAGS:	THIRD ANGLE PROJECTION 	BREAK UNNECESSARY EDGES UNLESS OTHERWISE NOTED 		MACHINE REFERENCE		STAMP DWG. NO. AND REV. LEVEL AT LOCATION MARKED ↑
		FINISH SURFACES TO UNLESS OTHERWISE NOTED 		SCALE 2:1		B	SHEET 1 OF 1 August 3, 2022 2:22:08 PM

C:\Users\Kristin\Documents\From Lenovo\Stackpole International Projects\Cam Follower Block Assembly\



SCALE 1 : 1



UNLESS OTHERWISE SPECIFIED: DIMENSIONS ARE IN INCHES X ± 0.1 XX ± 0.01 XXX ± 0.005 XXXX ± 0.0005	IMPERIAL	ALL FERROUS PARTS MUST BE DEMAGNETIZED		MATERIAL:	44W	MODEL REV:	DRAWING REV:
	DO NOT SCALE DRAWING	Automation Components					
GEOMETRIC DIMENSIONING AND TOLERANCING AS PER ASME Y14.5M-1994	Designed By:		K.Sey	2020-11-26			
	Detailed By:		K.Sey	2020-11-26			
PROPERTY OF STACKPOLE INTERNATIONAL NOT TO BE REPRODUCED WITHOUT EXPRESSED AUTHORIZATION	Checked By:		A.Car	2020-12-08	TITLE:		
	Approved By:				3" Mid Mounting Block		
THIRD ANGLE PROJECTION	BREAK UNNECESSARY EDGES UNLESS OTHERWISE NOTED	DWG NO: 2602-02-001-SHORT-MIDDLE-BLOCK					
FINISH SURFACES TO UNLESS OTHERWISE NOTED	FINISH SURFACES TO UNLESS OTHERWISE NOTED	STAMP DWG. NO. AND REV. LEVEL AT LOCATION MARKED ↑		SCALE 2:1	B	SHEET 1 OF 1	

5

4

3

2

1

D

C

B

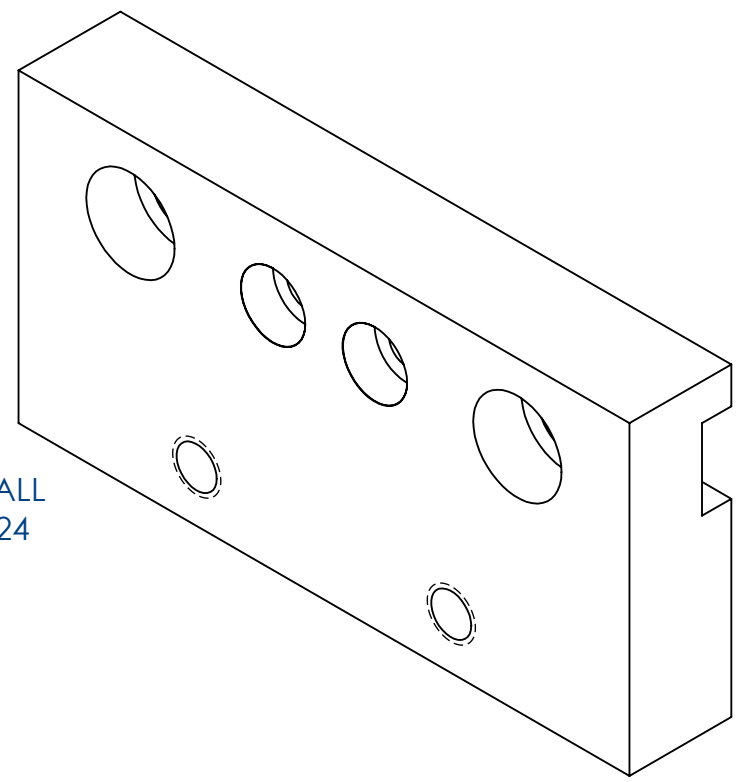
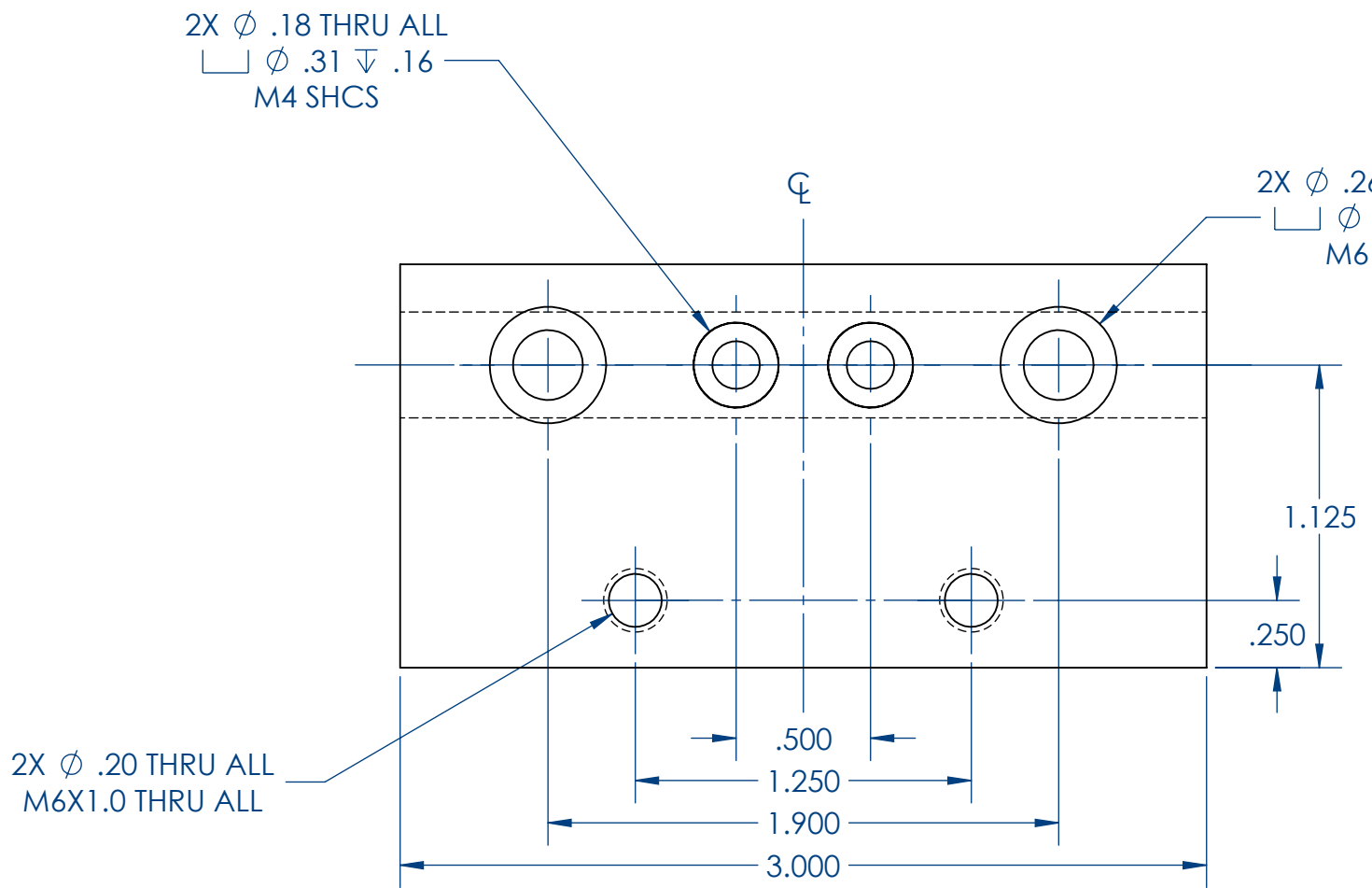
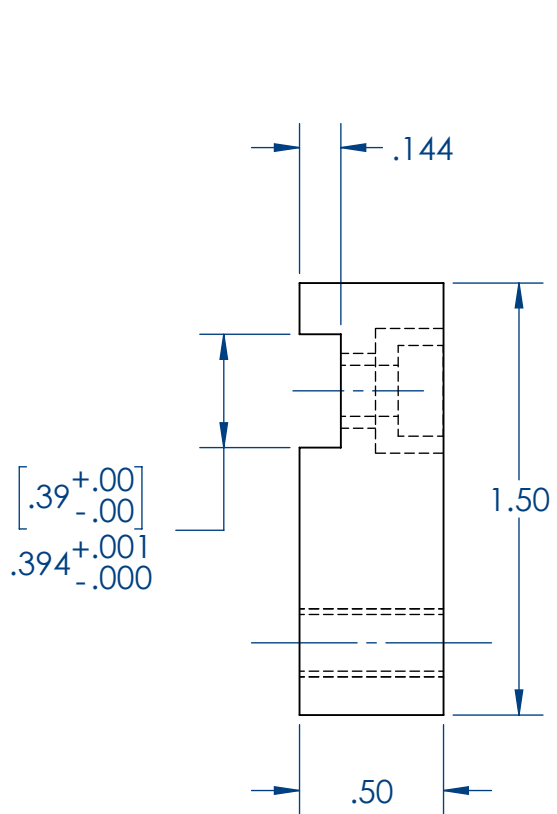
A

D

C

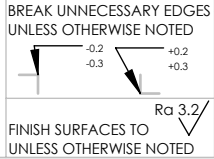
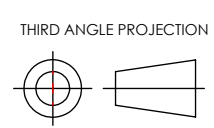
B

A



UNLESS OTHERWISE SPECIFIED: DIMENSIONS ARE IN INCHES X ± 0.1 XX ± 0.01 XXX ± 0.005 XXXX ± 0.0005 ANGULAR ± 0° 30'	IMPERIAL		ALL FERROUS PARTS MUST BE DEMAGNETIZED		MATERIAL:	44W	MODEL REV:	DRAWING REV:	
	DO NOT SCALE DRAWING		Automation Components						
	GEOMETRIC DIMENSIONING AND TOLERANCING AS PER ASME Y14.5M-1994		Designed By:	K.Sey	2020-11-26				
	PROPERTY OF STACKPOLE INTERNATIONAL NOT TO BE REPRODUCED WITHOUT EXPRESSED AUTHORIZATION		Detailed By:	K.Sey	2020-12-04				
		Checked By:	A.Car	2020-12-08	TITLE:				
		Approved By:			3" Conveyor Mounting Plate				
		MACHINE REFERENCE		DWG NO: 2602-02-002-SHORT-CONVEYOR-BLOCK					
		STAMP DWG. NO. AND REV. LEVEL AT LOCATION MARKED ↑		SCALE 3:2	B	SHEET 1 OF 1			

ADDITIONAL PROCESSES:	WEIGHT:
COATING: NO -	0.55
OTHER: NO -	TAGS:



3

2

1

C:\Users\Kristin\Documents\From Lenovo\Stackpole International Projects\Cam Follower Block Assembly\

5 4 3 2 1

D

C

B

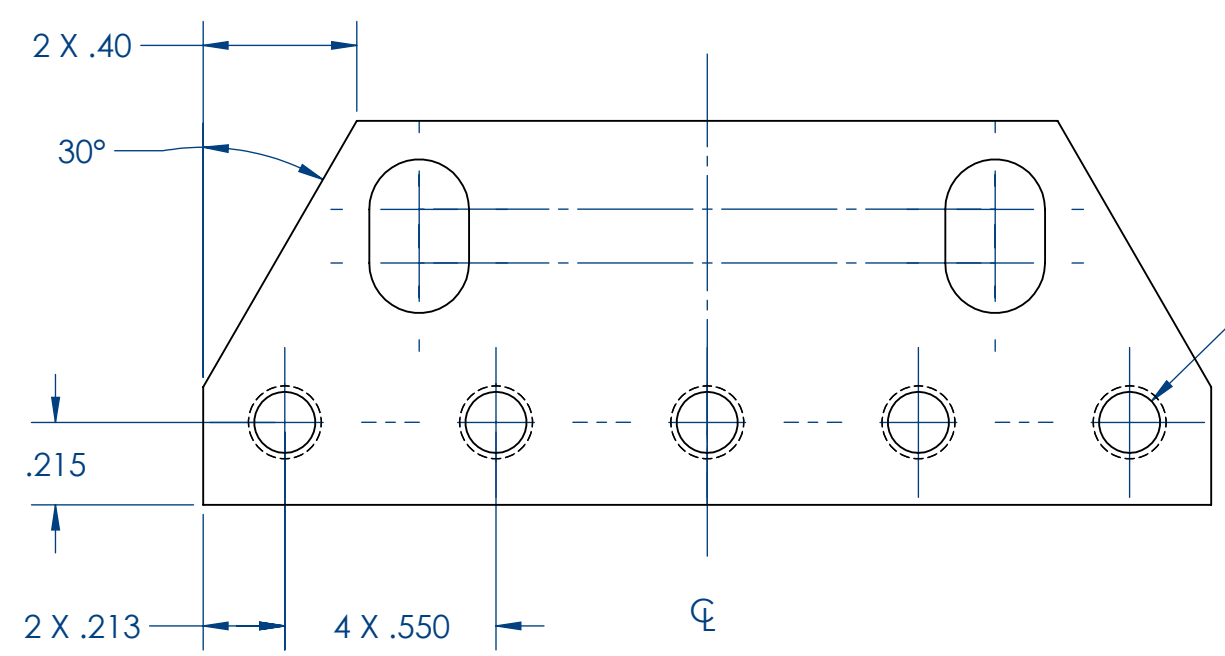
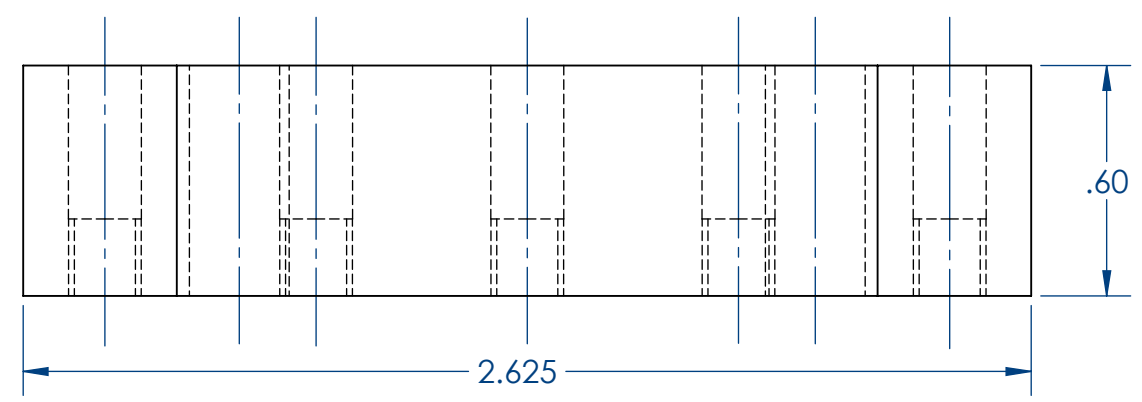
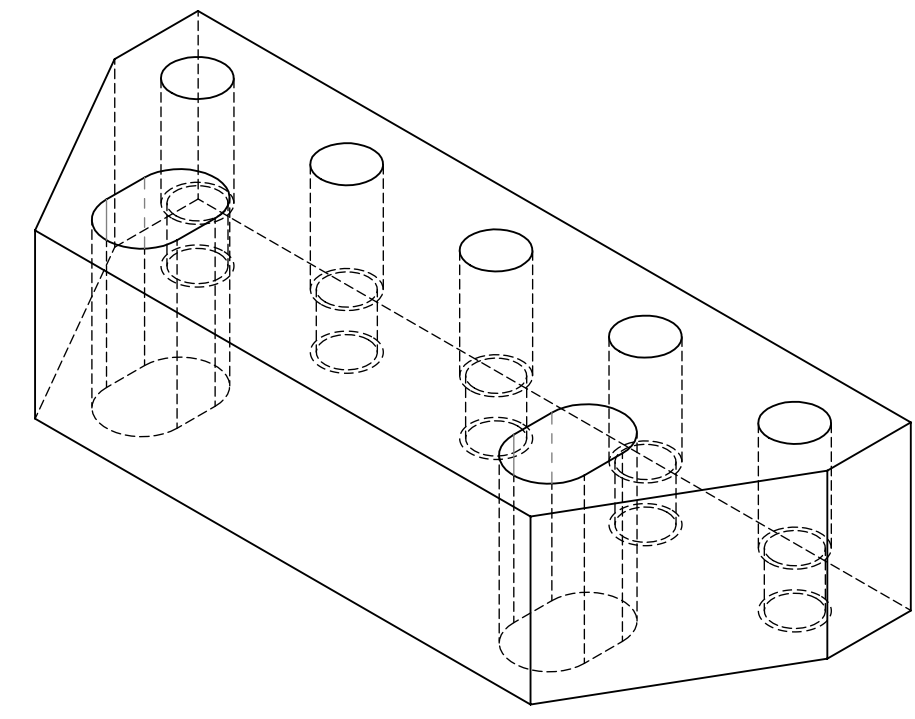
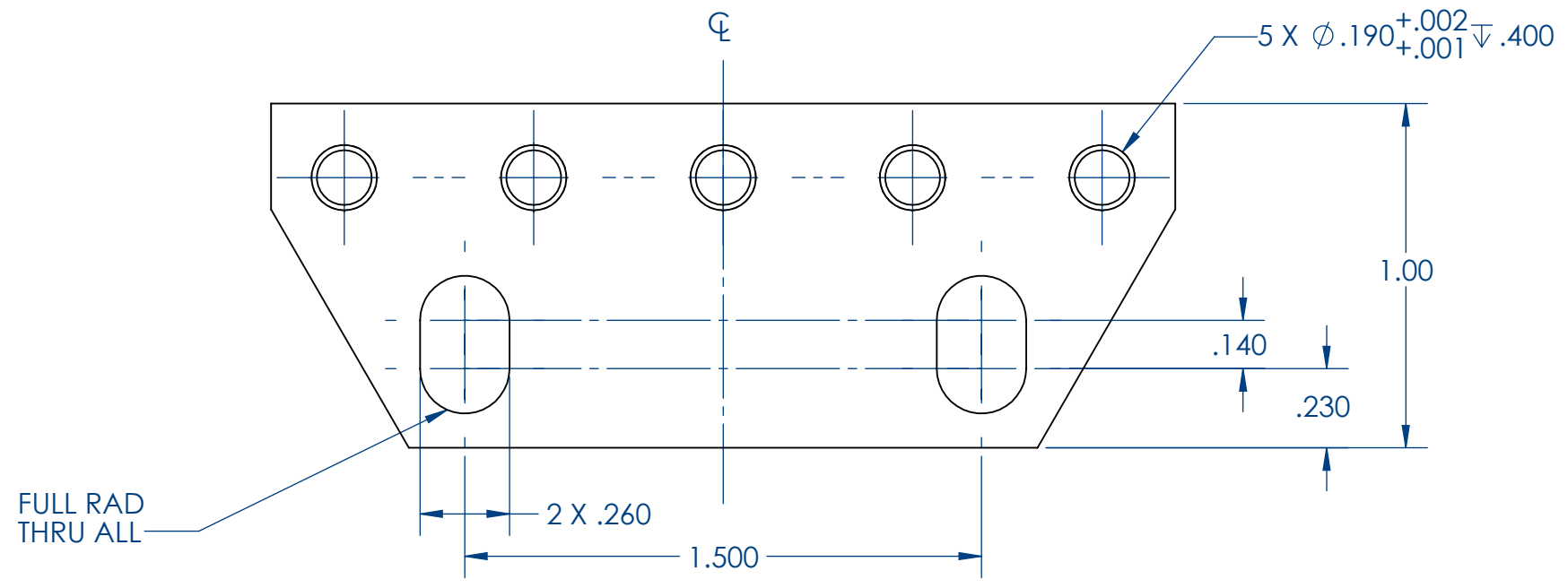
A

D

C

B

A



5X ϕ .16 ∇ .20
 10-32 UNF ∇ .20
 NOTE: GUIDING HOLE AND TAPPED HOLE SHOULD BE CONCENTRIC.

UNLESS OTHERWISE SPECIFIED: DIMENSIONS ARE IN INCHES X ± 0.1 XX ± 0.01 XXX ± 0.005 XXXX ± 0.0005	IMPERIAL	ALL FERROUS PARTS MUST BE DEMAGNETIZED		MATERIAL:	44W	MODEL REV:	DRAWING REV:
	DO NOT SCALE DRAWING	Automation Components					
GEOMETRIC DIMENSIONING AND TOLERANCING AS PER ASME Y14.5M-1994		Designed By:	K.Sey	2020-11-26			
PROPERTY OF STACKPOLE INTERNATIONAL NOT TO BE REPRODUCED WITHOUT EXPRESSED AUTHORIZATION		Detailed By:	K.Sey	2020-11-26			
THIRD ANGLE PROJECTION		Checked By:	A.Car	2020-12-08	TITLE: 3" Cam Follower Mounting Block		
BREAK UNNECESSARY EDGES UNLESS OTHERWISE NOTED		Approved By:			DWG NO: 2602-02-003-SHORT-FOLLOWER-BLOCK		
FINISH SURFACES TO UNLESS OTHERWISE NOTED		MACHINE REFERENCE		SCALE 1:1			
WEIGHT: 0.35		STAMP DWG. NO. AND REV. LEVEL AT LOCATION MARKED ↑		B		SHEET 1 OF 1	

C:\Users\Kristin\Documents\From Lenovo\Stackpole International Projects\Cam Follower Block Assembly\